

Partners

List of Beneficiaries and People involved in IM-CLeVeR

**Legal
Beneficiaries**

**Research
Groups**

People

**TL: Team
Leader**

Researchers

CNR-ISTC
Consiglio
Nazionale
delle
Richerche,
Istituto di
Scienze e
Tecnologie
della
Cognizione



LOCEN
Laboratory
of
Computational
Embodied
Neuroscience

TL:

Gianluca
Baldassarre

Marco Mirolli

Domenico

Parisi

Daniele

Caligiore

Fabian Chersi

Vincenzo

Fiore

Francesco

Mannella

Vieri

Santucci

Stefano

Zappacosta

UCP
Unit of
Cognitive
Primatology



TL:
Elisabetta
Visalberghi
Francesco
Natale
Valentina
Truppa
Elsa Addressi
Gloria
Sabbatini
Eugenia
Polizzi

Prof. Barto,
from UMass
=
University of
Massachusetts
Amherst,
participate
to the
project
personally as
an
"Associate"
of
CNR-ISTC

Prof. Barto
Leads the
Autonomous
Learning
Laboratory



TL: Andrew
Barto
Bruno Castro
da Silva
Andrew Stout
Gwyn
Mitchel
Jennifer Dona

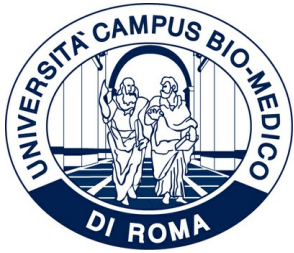


TL: [Eugenio
Guglielmelli](#)

Domenico
Campolo
Loredana
Zollo
Nevio
Tagliamone
Luca Lonini
Flavia
Salvatori

BRBL
Biomedical
Robotics and
Biomicrosystems
Laboratory

UCBM
Università
Campus
Biomedico



LDN
Laboratory
of
Developmental
Neuroscience

TL: **Flavio
Keller**

USDF
University of
Sheffield



ABRG
Adaptive Behaviour
Research
Group

TL: Peter
Redgrave

Kevin Gurney
Tom Stafford
Ansgar
Koene
Martin
Thirkettle

FIAS
Stiftung
Frankfurt
Institut for
Advanced
Studies



Neuro-Branch



TL: Jochen
Triesch

Cornelius
Weber
Constantin
Rothkopf

UU
University of
Ulster



Cognitive
Robotics



TL: Ulrich
Nehmzow

Joan Condell
Mia Siddique

AU
Aberystwyth
University



Intelligent
Robotics

TL: Mark
Lee

Martin

Huelse

Mark Neal

James Law

Thomas Izett

IDSIA-SUPSI

Scuola

Universitaria

Professionale

della

Svizzera

Italiana,

Istituto Dalle

Molle

sull'Intelligenza

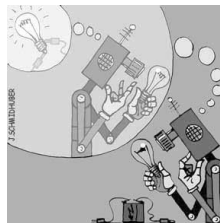
Artificiale

Reinforcement

Learning

Research

Group



TL: Juergen
Schmidhuber

Carlo Lepori

Faustino

Gomez

Alexander

Forster

Julian

Togelius

Ryad

Benosman

Jan Koutnik

Kail Frank

Davide

Migliore

Tobias

Glasmachers